

# Wetroom Market and Influences .

- Estimated 5% of homes in the UK now have at least 1 wetroom
- By 2019 estimated market increase is 34% into the house builder market alone
- House builders are increasingly adding wetroom`s into there specification to add value and attract buyers

## •End User Sectors

- House Owners
- Private House Developers
- Social Housing
- Extra Care Housing
- Hotels
- Heath and Leisure Clubs

## •Why Wetrooms

- Inspirational Look
- Demographic Trends
- Disabled Population
- Housing Standards (Life Time Homes )

## •What`s It worth

- As an average there are 350,000 wetrooms done each year in the Uk
- With a average value of 3 – 5k each !!!!!!!!!!!

# Wetroom Installation Instructions .

## Premier Deck

Strongest most stable former available

22mm profile (All the way round )

Can be directly tiled or vinylled

Built in gradients

Waste off set to avoid joists

Totally Self Supporting

470 kilo load capacity

Made of 50% recycled plastic

100% recyclable

Fast and Easy to Fit

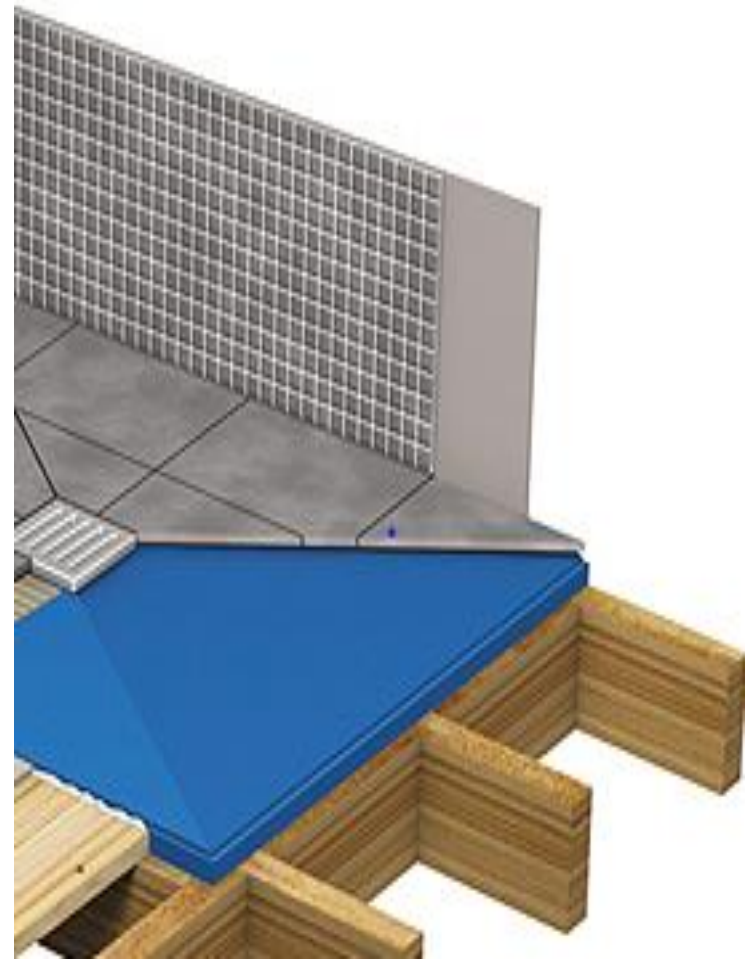
Can be trimmed by up to 60mm on site

11 Standard Drain Sizes Options

5 Linear Drain Sizes Options



# Wetroom Installation Instructions .



# Wetroom Installation Instructions .

## •TIMBER FLOOR REINFORCING SHEET INSTALATION

- Floor needs to be clean of dirt , dust and any debris.
- Floor then needs to be primed using Nicobond primer applied a thin even layer with a brush of a blend of 4 volumes water to 1 volume Nicobond Universal Bonding Agent and Sealer.
- Once dry Nicobond Plastic Ply can be installed as per the photographs , remove the white release paper on the back of the sheet and apply plastic ply to the substrate
- Plastic Ply should be cut with scissors and laid in a brick bond fashion overlapping main floorboard joints below, and making sure that the plastic ply covers all the floor right up to the edge of the premier deck
- Plastic Ply is self adhesive so no curing time is required before the next stage of the installation.



Ensure floor is clean and dust free



Prime timber and allow to dry



Remove release paper



Cut the Plastic Ply using scissors



Lay the Plastic Ply sheeting directly to the floor in a brick type pattern

# Plastic Ply .

## •Opportunities

- House Developers
- Tiling Contractors
- Plumbing Contractors
- General Builders
- Independent Retailers
- Merchants

## •Tiles and Bathrooms

- Additional £18.92 per meter
- Up sell to Professional S1 Adhesives
- Offer the correct best product for the solution.

## •Features and Benefits

- Easy to cut
- Self Adhesive
- Strong Durable
- Ready to tile on
- 2mm thick
- Moisture resistant

Sub Floor	Size	Thickness	Weight	Moisture Resistance	Installation
Plywood	2400x1200	15mm (min)	Heavy	Low	Conditioned, cut, sawed and screwed
Chipboard	2400x1200	18mm	Heavy	Low	Conditioned, cut, sawed and screwed
Polyethylene separating system	Large rolls	4 - 8mm	Heavy	High	Bonded with adhesive
Fibre cement based boards	2400x1200	6 - 15mm	Heavy	High	Cut, sawed and screwed
Plastic Ply	600x500	2mm	Light	High	Peel off backing and stick to floor



### 15mm Plywood

Large, heavy sheets, awkward to work with. Have to be conditioned, cut with a saw, primed and then screwed down. Plywood is sensitive to moisture and humidity changes and is prone to shrinkage and warping. At 15mm thickness it also creates a step which is not desirable.



### 18mm Chipboard

Large sheets which are awkward to place. The sheets are easy to damage, costly to replace and have to be screwed down. Chipboard is moisture sensitive and is not a suitable material to tile directly onto. At 18mm thickness they also create a step which often requires a door to be cut down.



### Polyethylene/Plastic Separating Systems

These are designed as disconnecting systems, not reinforcing sheets and although they are well suited to control lateral movement they are not good for controlling deflection. They are also supplied in large rolls which are not easy to handle on site, and need to be bonded with adhesive to the timber base, adding more additional cost in both material and time.



### Fibre Cement Based Boards

Large sheets which can be awkward to place. The sheets are easy to damage and have to be cut with a saw, creating a lot of dust and screwed down. At varying thickness from 6 - 15mm thickness they also create a step which is not desirable.



## Wetroom Installation Instructions .

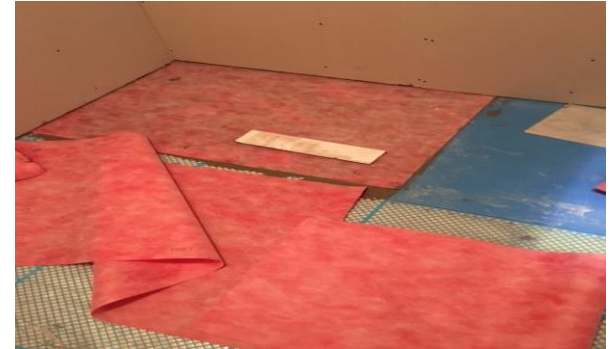


- “Timber is not considered to be a suitable base for floor tiling in wet, frequently damp, or high humidity areas, unless appropriate precautions are taken (BS 5385-4). Noggins might be required between joists in order to achieve the required rigidity. The limit of deflection normally permitted for domestic timber floors (see BS 5268-2) might be too great to avoid damage to tiling systems.”

# Wetroom Installation Instructions .

## •TANKING THE FLOOR

- Plastic Ply has no curing time so can be tanked as soon as it has been fitted
- Fill the small voids in the plastic ply using Nicobond Rapid Flex Adhesive.
- Lay Nicobond Wet Room Tanking Sheet onto the a S1 Deformable Adhesive gentle tapping and smoothing sheet into the adhesive with a grout float ensuring the full adhesion.
- Cover the whole floor or the wetroom butting the sheets up against each other , cut sheet with scissors where required
- Once the S1 Deformable Adhesive has dried tape the joints of the Wet Room Tanking Sheet with Wet Room Waterproof Tape (which is self adhesive for ease and speed of fit)



# Wetroom Installation Instructions .





# Wetroom Installation Instructions .

## •TANKING THE FLOOR

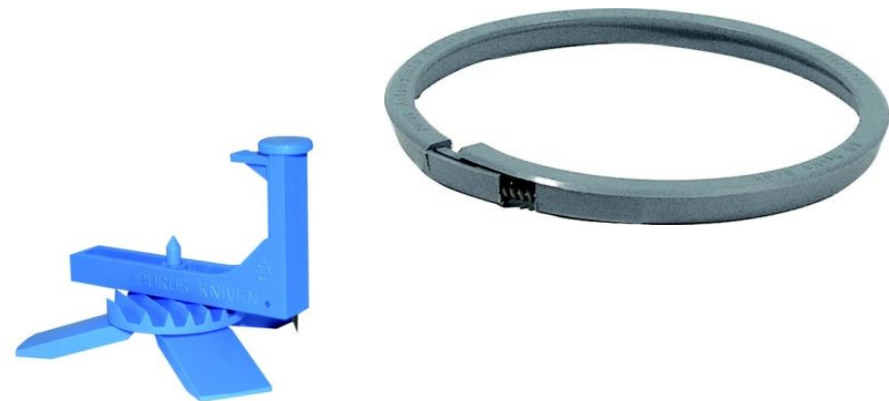
- Before installing any Nicobond Taping Systems ensure areas are clean of debris.
- All internal and external angles need to be sealed correctly with Nicobond Self Adhesive Preformed Corners.
- Nicobond Wetroom Waterproof Tape can now be used up all the horizontal Joint and also along the Vertical Joints ensuring a watertight environment .
- Use Small Pipe Collars on any piping coming through the walls in to the wetroom.
- Using Nicobond Wet Room Waterproof Tape seal the join between the edge of the Premier Deck and the floor ensuring all tapes are overlapped and fully stuck down
- Use the Nicobond Tape to seal the joints between waterproof tanking sheets.



# Wetroom Installation Instructions .

Installation of the Large Pipe Collar.

- Remove the internal clamping ring from the installed phleximax waste and place the blue phleximax knife (Tripod Part) into the space where the clamping ring has been removed from.
- Remove the backing from the self adhesive large pipe collar.
- Place Collar over the waste allowing the spike on the tripod to pierce the collar.
- Gently smooth the large self adhesive collar down on the rest of the premier deck.
- Put the top half of the knife back on the tripod and slide the and cut the perfect circle over the waste.
- Push the Large collar down firmly in to the phleximax waste.
- Take the internal clamping ring and push firmly back into its original position securing a firm water tight seal.



# Wetroom Installation Instructions .

- TAPING ALL REQUIRED JOINTS

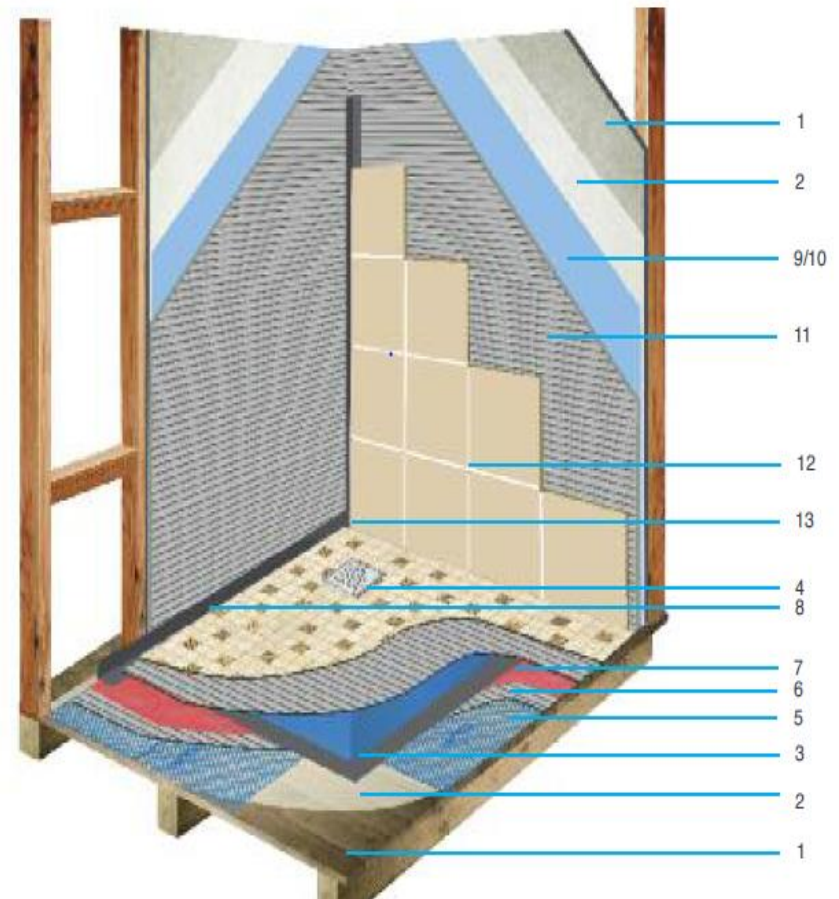
- All internal and external angles need to be sealed correctly with Nicobond Self Adhesive Preformed Corners.
- Nicobond Wetroom Waterproof Tape can now be used up all the horizontal Joint and also along the Vertical Joints ensuring a watertight environment .
- Use Small Pipe Collars on any piping coming through the walls in to the wetroom.
- Using Nicobond Wet Room Waterproof Tape seal the join between the edge of the Premier Deck and the floor ensuring all tapes are overlapped and fully stuck down
- Once all the joints are taped correctly use the Nicobond Waterproof Membrane over the walls in the wet area
- Two coats are required (North / South motion for the first coat ) allow to dry fully
- Apply second coat (East / West motion) ensuring full coverage allow a minimum of 0.6mm for both coats and all pipe covers and tape are sealed fully (Allow to dry before Tiling)



# Wetroom Installation Instructions .

## TILING OF WETROOMS

- Adhesive to be a S1 deformable cement based adhesive.
- Grout with Starlike Extreme Performance .
- Tiles need to be fully embedded in the correct thickness of adhesive.
- Tile Insert needs to be securely fixed with recommended tile Adhesive and a silicone bead between the edge of the insert and the tile is required for movement and waterproofing.
- Insert silicone movement and perimeter joints to internal corners and wall and floor junctions.





# Wetroom Installation Instructions .

## PRODUCTS REQUIRED

1. Premier Deck
2. Phleximax Waste
3. Grate
4. Phlexi Knife
5. Large Pipe Collar
6. Small Pipe Collars
7. Plastic Ply
8. Waterproof Tanking Sheet
9. Waterproof Tape
10. Internal / External Corners
11. S1 Deformable Adhesive
12. Starlike Grout
13. By using the correct system you achieve complete waterproof bathroom in accordance to BS5385 Part 4 for the creation of a wetroom.



